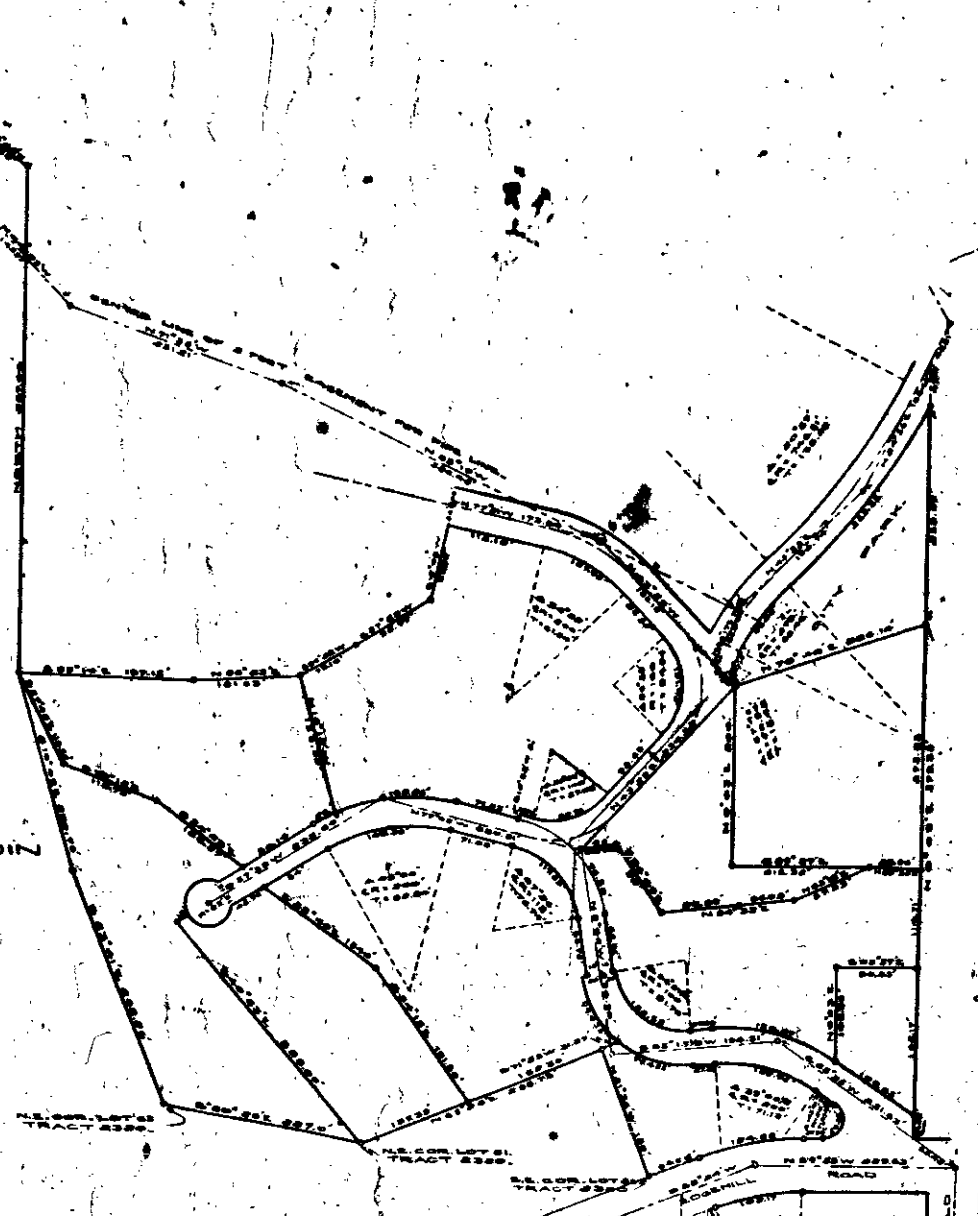




SCALE 1"=100'
OCT. 26, 1922.

PORTION OF SHANDIN
HILLS DISTRICT.

Sewer on LITTLE MOUNTAIN





SCALE 1"=100'
OCT. 26, 1922.

PORTION OF SHANDIN
HILLS DISTRICT.

Sewer on LITTLE MOUNTAIN

